

Kenko

PRODUCT CATALOG



www.kenkoglobal.com



We open the world of imagination

Kenko Tokina Co., Ltd is Japan's largest photographic accessory manufacturer and distributor with decades of old tradition in manufacturing quality accessories to enhance the enjoyment of photography. This tradition has guided the development of innovative and reliable products that help photographers all over the world in their creation of beautiful images.

Kenko Tokina was founded as a manufacturer specializing in optical products in September 1957. Based on advanced optics technology, our business has focused on the development and sales of photographic and industrial use filters as well as optical products such as binoculars and astronomical telescopes. We are now rapidly expanding business through the development and marketing of popular new products in a diversity of fields ranging from more and more digitalized photographs and videos to security services. Contributing to the harmonization of people, society and nature and the realization of a heart-warming society through the creation and innovation of enterprises, we are determined to fulfill our responsibility as a global corporation.



The flattest filter ever

ZX PROTECTOR



Traditional technology of fixing glass element inside the frame using hard pressing method or retaining ring may occasionally cause a slight glass distortion, which may negatively affect the resolution performance. Our research results show that the larger the glass element, the greater glass distortion may occur.

We focused our attention on large size filters such as 82mm, 86mm, 95mm and developed a new special technology that aims to minimize stress on the glass and thus provides the best optical performance of the filter.



Floating Frame Technology

By adopting the newly developed "Floating Frame Technology", which provides a special elastic cushion layer between the glass and the frame, the glass is firmly fixed while the pressure on it is reduced to a minimum level. Thus, the glass element remains flat, not distorted or twisted inside the frame.



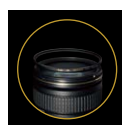
ZR (Zero Reflection) Multi-Coating

This innovative coating will not interfere with colors or light transmission. Reflections are suppressed by allowing the light to enter the filter at virtually any angle, and an equal to 0.3% level of surface reflectivity is achieved. Moreover, an effective water&oil repellent coating is deposited on the final coating layer of the filter glass. Water drops, oil stains, fingerprints, dirt etc. can be easily wiped off, making everyday maintenance fast and easy.



Low profile knurling frame

The low profile knurling frame on the front of the filter allows a safer grip when attaching and detaching the filter, preventing from accidental falls or slips.



Smooth attachment and detachment

By applying a lubrication treatment to the lens mounting screw, attachment and detachment of these filters to the lens result smooth, without the risk of chipping or scratching the lens.

AVAILABLE SIZES (mm) :

82

86

95

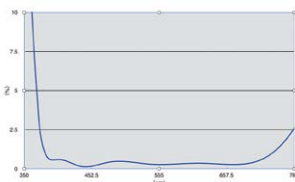
At the top end of all Kenko filters

Celeste FILTER

Celeste filter series is designed to provide the best optical performance and superior advantages to the photographer with no negative influence on the image. The naming takes its origin from the Latin word "caelestis" that means magnificent, something above human possibilities and the Italian "celeste" which represents the color of the clear sky. Celeste series is represented by Celeste UV and Celeste C-PL filters with a full range of sizes for DSLR and mirrorless cameras.

Extremely low light reflectivity performance

This superior optical performance of Celeste filters is achieved by applying the newly developed 18-layer (both sides) anti-reflection "Super ZR coating". Thanks to this coating technology we managed to reach the light reflectivity level of 0.2% for UV and 0.3% for C-PL.



Anti-Stain & Water Repellent Coating

Celeste filters adopt Anti-Stain Coating (ASC) that is layered on both sides of the glass for easier and more effective filter maintenance. Anti-Stain Coating is already being used in Kenko REALPRO series and got high valuation from photographers all over the world.



New sophisticated frame and package

The frame of the Celeste filters is very slim and allows attaching lens caps safely. Enlarged effective inner diameter due to improved retain ring prevents image from vignetting.



Celeste UV



Celeste UV absorbs the ultraviolet rays that often makes outdoor photographs hazy and indistinct. This multi-purpose filter can serve as a permanent lens protector. Outstanding optical performance will not allow filter to affect the color and resolution of the image.

AVAILABLE SIZES (mm) :

37	40.5	46	49	52	55	58	62	67	72	77	82
----	------	----	----	----	----	----	----	----	----	----	----

Celeste C-PL



C-PL filter allows you to remove unwanted reflections from non-metallic surfaces such as water, glass etc. C-PL filter also enables colors to become more saturated and appear with better contrast. The effect is often used to increase the contrast and saturation of blue sky and white clouds. Celeste C-PL uses high transparency polarizing film that gives the advantage of 1 more stop.

AVAILABLE SIZES (mm) :

37	40.5	46	49	52	55	58	62	67	72	77	82
----	------	----	----	----	----	----	----	----	----	----	----

REALPRO FILTERS

PRO IMAGING & HD MOVIE

With

ASC
ANTI-STAIN
COATING

Kenko REALPRO series is an upgraded version of best seller PRO1D series. REALPRO series is dedicated to all out-door and in-door photographers that work in different shooting environments. Besides current anti-reflection multi-coating filters adopted for digital camera sensors, REALPRO filters obtained one important feature that will be useful at outdoor shooting and when cleaning filters from dust and smudges. It is Anti-Stain Coating.

Anti-Stain & Water Repellent Coating

Thanks to a new formula of coating material, the surface of REALPRO filters are smooth. It helps moisture and water drops to bead up and slip down leaving the filter clean. Smudges and finger prints are easy to wipe away and the cleaning process will become an entertaining time for you.



Anti-Reflection coating

Since the sensor of digital SLRs or mirrorless cameras becomes more sensitive to light coming through lens, Anti-Reflection multi coating is a must for photographic filters. REALPRO series filters will dramatically reduce the appearance of flares and ghosting caused by random reflection inside the lens.



Slim frame

REALPRO filter series adopts slim profile frame that ensures secure utilization and absence of negative effect of the image.



REALPRO PROTECTOR



REALPRO Protector is a perfect option for those who prefer using lens safely and protect from unexpected physical damage. REALPRO Protector is made of fine and clear glass that will not affect the overall quality of your image. Suggested for all the camera lens users and particularly outdoor active photographers who work in extreme conditions

FEATURES

ASC Anti-stain Coating: the filter that stays clear for a long time
Anti-Reflection Multi Coating: helps to transmit light and minimize reflections
Slim Frame: to avoid vignetting effect on wide and super wide angle lenses
Knurled Edge Frame: easy and stress-free removal
Black Almite frame: to reduce to minimum any unwanted reflections
Black Rimmed Glass: to minimize reflections inside the frame

AVAILABLE SIZES (mm) :

37 40.5 43 46 49 52 55 58 62 67 72 77 82 86 95 105



REALPRO UV



REALPRO UV is a multi-purpose fine-weather filter that blocks UV light, the reason of an unclear and hazy image on a sunny day. REALPRO UV filter adopts UV-CUT glass that blocks unwanted UV spectrum before light comes out of the filter. This type of glass has a slight yellow tint, but there is no any negative effect on the image.

FEATURES

ASC Anti-stain Coating: the filter that stays clear for a long time
Anti-Reflection Multi Coating: helps to transmit light and minimize reflections
Slim Frame: to avoid vignetting effect on wide and super wide angle lenses
Knurled Edge Frame: easy and stress-free removal
Black Almite frame: to reduce to minimum any unwanted reflections
Black Rimmed Glass: to minimize reflections inside the frame

AVAILABLE SIZES (mm) :

37 40.5 43 46 49 52 55 58 62 67 72 77 82 86 95 105



REALPRO C-PL



REALPRO Circular PL filter is used to reduce unwanted reflections from non-metallic surface such as water or glass and increase saturation and contrast of the sky and objects. For example, you can enhance saturation of the sky in order to stress the presence of white clouds even if the atmosphere is hazy.

FEATURES

ASC Anti-stain Coating: the filter that stays clear for a long time
Anti-Reflection Multi Coating: helps to transmit light and minimize reflections
Slim Frame: to avoid vignetting effect on wide and super wide angle lenses
Knurled Edge Frame: easy and stress-free removal
Black Almite frame: to reduce to minimum any unwanted reflections
Black Rimmed Glass: to minimize reflections inside the frame

AVAILABLE SIZES (mm) :

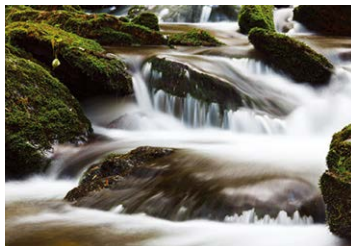
37 40.5 43 46 49 52 55 58 62 67 72 77 82 86 95 105



REALPRO ND 4, 8, 16, 32, 64, 100, 200, 500, 1000

This REALPRO ND filter reduces the amount of light entering the lens so wider apertures can be selected which is perfect for portraiture to reduce depth of field. Subject appears crisp and clear while the background become a soft blur. Also widely used for photographs of waterfalls and other nature scenes to emphasize the movement.

ND (Filter Factor)	Density	Adjust Exposure Stops (EV)	Transmission (%)
ND4	0.6	2.0	25.000
ND8	0.9	3.0	12.500
ND16	1.2	4.0	6.250
ND32	1.5	5.0	3.125
ND64	1.8	6.0	1.563
ND100	2.0	6 1/2	1.000
ND200	2.3	7 1/2	0.500
ND500	2.7	9.0	0.200
ND1000	3.0	10.0	0.010



FEATURES

Anti-Reflection Multi Coating: greatly decreases the risk of flare and ghosting
ND Deposition Process Coating: controls neutrality and IR pollution.
Slim Frame: to avoid vignetting effect on wide and super wide angle lenses
Knurled Edge Frame: easy and stress-free removal
Black Almite Frame: reduces to minimum any unwanted reflections
Black Rimmed Glass: to minimize reflections inside the frame

AVAILABLE SIZES (mm) :

49	52	55	58	62	67	72	77	82
----	----	----	----	----	----	----	----	----



FEATURES

Anti-Reflection Multi Coating: greatly decreases the risk of flare and ghosting
ND Deposition Process Coating: controls neutrality and IR pollution.
Black Almite Frame: reduces to minimum any unwanted reflections

AVAILABLE SIZES (mm) :

49	52	55	58	62	67	72	77	82
----	----	----	----	----	----	----	----	----

REALPRO SOFTON A



Create a picture with a clear focus and a soft gradation. This effect is especially evident on an object with a point light source.

FEATURES

Anti-Reflection Multi Coating: helps to transmit light and minimize reflections
Slim Frame: to avoid vignetting effect on wide and super wide angle lenses
Knurled Edge Frame: easy and stress-free removal
Black Almite Frame: to reduce to minimum any unwanted reflections
Black Rimmed Glass: to minimize reflections inside the frame



AVAILABLE SIZES (mm) :

49	52	55	58	62	67	72	77	82
----	----	----	----	----	----	----	----	----

REALPRO R-CROSS SCREEN



The R-Cross Screen filter adds a dramatic four-cross flare to very bright areas such as glittering surface of water, sun rays through the tree leaves, jewelry and electric illumination creating romantic effect. Ideal for photographers who shoot night scene illumination or other scenes with strong light sources. By rotating the filter flares will also rotate till a preferable position is found.

FEATURES

Anti-Reflection Multi Coating: helps to transmit light and minimize reflections
Slim Frame: to avoid vignetting effect on wide and super wide angle lenses
Knurled Edge Frame: easy and stress-free removal
Black Almite Frame: to reduce to minimum any unwanted reflections
Black Rimmed Glass: to minimize reflections inside the frame



AVAILABLE SIZES (mm) :

49	52	55	58	62	67	72	77	82
----	----	----	----	----	----	----	----	----

REALPRO R72



The filter cuts off visible light and passes infrared light allowing you to create infrared effect that are different from what you would actually see.

FEATURES

Anti-Reflection Multi Coating: helps to transmit light and minimize reflections
Black Almite Frame: to reduce to minimum any unwanted reflections
Black Rimmed Glass: to minimize reflections inside the frame

AVAILABLE SIZES (mm) :

49	52	55	58	62	67	72	77	82
----	----	----	----	----	----	----	----	----

SMART Filter

High Cost Performance
Newly Designed Slim Frame



The Kenko Smart filters are high quality camera lens filters that are kept economical due to advanced mass production method. They adopt superior anti-reflection and UV cut (MC UV370 only) coating on both sides (Circular-PL and ND8 adopt on single side only). This series is created with a low profile aluminum frame to match current wide angle lenses. This is a smart filter solution for every day photography.

SMART Filter

FILTER KIT



Kenko Smart Filter Kit features 3 main filters in one smart package. The filter kit includes MC UV370, Circular PL and ND8 filters. This kit is specially designed for beginners and amateur photographers as a initial set to start photography.

AVAILABLE SIZES (mm) :

37	40.5	43	46	49	52	55	58	62	67	72	77	82
----	------	----	----	----	----	----	----	----	----	----	----	----

SMART Filter

Clear PRO CPL + UV Absorbing



This filter uses a newly developed high transparency film that transmits more visible light through the filter while still filtering the same amount of polarized light. The glass of the Clear PRO filter also has UV absorbing properties making the Clear PRO a combination of CPL and UV filter.

AVAILABLE SIZES (mm) :

37	40.5	43	46	49	52	55	58	62	67	72	77	82
----	------	----	----	----	----	----	----	----	----	----	----	----

SMART Filter

MC UV370



The Smart MC UV370 filter effectively absorbs ultraviolet rays which often make outdoor photographs hazy and less crisp. This is a good multi-purpose filter that can be kept on the lens at all time for protection. This filter is multi-coated on both sides of the glass to reduce the chance of reflections or flare that could ruin a good shot. This filter has a high-quality, durable aluminum frame that can stand up to years of use.

AVAILABLE SIZES (mm) :

37	40.5	43	46	49	52	55	58	62	67	72	77	82
----	------	----	----	----	----	----	----	----	----	----	----	----

SMART Filter

MC Protector



The Smart MC Protector is multi-coated on both sides of the glass to reduce the chance of reflections or flare that could ruin a good shot. A low profile frame helps to avoid vignetting on a wide angle lens. This is a good multi-purpose filter that can be kept on the lens at all time for protection. This filter has a high-quality durable aluminum frame that can stand up to years of use.

AVAILABLE SIZES (mm) :

37	39	40.5	43	46	49	52	55	58	62	67	72	77	82
----	----	------	----	----	----	----	----	----	----	----	----	----	----

SMART Filter

Circular PL



The Smart C-PL filter is used to increase color saturation and eliminate reflections from non-metallic surfaces like glass or water. It will also reduce the softness in scenery caused by atmospheric haze. This filter will not change the overall color balance of a photograph.

AVAILABLE SIZES (mm) :

37 40.5 43 46 49 52 55 58 62 67 72 77 82

SMART Filter

ND8



The Smart ND8 filter allows 8-times longer shutter speed instead of reducing the aperture to its limit. This filter reduces the amount of light entering the lens so wider apertures can be selected.

AVAILABLE SIZES (mm) :

37 40.5 43 46 49 52 55 58 62 67 72 77 82



ND 2.5 to ND 1,000 - Just turn the outer filter ring

Kenko's uniquely designed variable neutral density filter provides the equivalent brightness range of ND 2.5 to ND 1000. (practical use is up to ND450).

The singular versatility of the Variable NDX filter not only replaces several neutral density filters but it also prevents image from vignetting which may be caused by using several filters.

- DMC - Digital Multi-Coated
- No Color Shift
- No Polarizing Effect
- For HD/SLR MOVIES
- For Longer Exposures
- For Wider Apertures
- Prevents Overexposure
- Highlight Clipping



AVAILABLE SIZES (mm) : 77 82

PL FADER ND3-ND400

The large frame is considered so that vignetting might not occur. It is ND filter which can adjust the light volume by one self. It is regulation freedom between ND3-ND400 and an affordable ND filter.



Newly Developed Unique Design

The PL FADER uses two high-transparency polarizing film to control the amount of light that passes through the filter into camera lens.

For Longer Exposure

Without changing the aperture, the PL FADER allows to change the shutter speed according the effect desired.

For Wider Apertures

With the PL FADER the shutter speed remains constant for a wide aperture easily creating a blurred background effect.

Prevents Overexposure / Highlight Clipping

Even with a shutter speed of 1/8000 seconds, a large aperture of F1.4 or F1.2 can cause overexposure/highlight clipping. With the PL FADER the chance of overexposure is eliminated.

Flexible Light Control for HD/SLR Video

For HD video-enabled cameras use the PL FADER to easily adjust light control.

AVAILABLE SIZES (mm) :

52 55 58 62 67 72 77 82

ASTRO LPR

LIGHT POLLUTION RESISTANCE FILTER

Using a IAD (Ion Assisted Deposition) System, which irradiates and ionizes the base material from an ion gun inside of a vapor deposition machine, creates a layer with higher adhesive coating than normal formed by gas.

ASTRO LPR FILTER - TYPE I



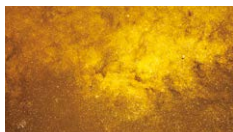
▲ With LPR TYPE I Filter

Kenko Astro LPR Type I is designed mostly for visual astronomical observation of celestial bodies, stars and constellations. This filter transmits only light spectrum that comes from celestial bodies, and cuts other light, thus enhancing contrast and clearness of the image. This filter is also modified to transmit the light that comes from two tails of the comet providing natural colors of the object. This modifications makes Kenko Astro Type I more demanded among astronomers. Kenko Astro LPR Type I adopts precision coating based on Ion Assisted Deposition technology. In order to achieve the desirable coating specification each coating layer is sprayed on the surface of the filter with the help of ion particles creating the coherent multilayer surface more durable, more harder compared with the common coating.

AVAILABLE SIZES (mm) :

31.7	48	52	67	72	77
------	----	----	----	----	----

ASTRO LPR FILTER - TYPE II



▲ Without Astro LPR Type II



▲ With Astro LPR Type II

Kenko Astro LPR Type II filter is designed for photographing of astronomical observation of celestial bodies, stars and constellations. Kenko Astro LPR Type II cuts off light pollution from artificial lighting of city streets (mercury and sodium gas charging lamps), and transmits only the light spectrum of stellar objects. Kenko Astro LPR Type II adopts precision coating based on Ion Assisted Deposition technology. In order to achieve the desirable coating specification each coating layer is sprayed on the surface of the filter with the help of ion particles creating the coherent multilayer surface to be more durable, much harder in comparison with the common coating.

Note:

It is not recommend using Kenko Astro LPR Type II filter with 100mm telephoto lenses or more (converting to 35mm film).

AVAILABLE SIZES (mm) :

31.7	48	52	67	72	77
------	----	----	----	----	----

AC CLOSE UP LENS

High quality attachment lenses for close-up work

Magnification can be chosen by changing the type of close-up lens. Vivid details of a flower or an insect can be depicted expanding the ability of capturing a world which cannot usually be seen.

AC Close-up Lenses No.2, 3, 4, 5

These are high-performance achromatic lenses consisting of one group of two optical elements that makes image sharp and free of aberrations. The line-up includes general close-up lenses such as No.2, 3, 4 and 5 which is suitable for lenses with short minimum focus distances.



No.2



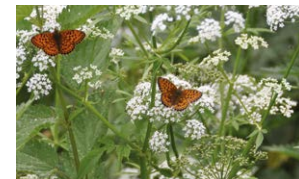
No.3



No.4



No.5



Without Lens



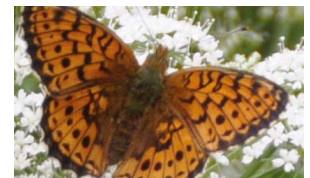
With No.2 Lens



With No.3 Lens



With No.4 Lens



With No.5 Lens

No.2 Filter AVAILABLE SIZES (mm) :

49	52	55	58	62	67	72	77
----	----	----	----	----	----	----	----

No.3, 4, 5 Filter AVAILABLE SIZES (mm) :

49	52	55	58
----	----	----	----

DG EXTENSION TUBE SET



12mm, 20mm, 36mm EXTENSION TUBE SET FOR Canon EF/EF-S, Nikon AF, SONY α



Extension tubes are designed to enable a lens to focus closer than its normal minimum focusing distance. Getting closer has the effect of magnifying your subject (making it appear larger in the viewfinder and in your pictures). They are exceptionally useful for macro photography, enabling you to convert almost any lens into a macro lens while maintaining its original optical quality.

The DG extension tubes have no optics. They are mounted in between the camera body and lens to create more distance between the lens and sensor. By moving the lens farther away from the film or CCD sensor in the camera, the lens is forced to focus much closer than normal. The greater the length of the extension tube, the closer the lens can focus.



50mm 1.4 L lens only



50mm 1.4 L +
20mm Extension Tube



50mm 1.4 L +
36mm Extension Tube

SPECIFICATIONS	12mm	20mm	36mm
Diaphragm coupling:	Perfect coupling		
TTL EE metering:	Perfect coupling		
Length of tubes:	12mm	20mm	36mm
Diameter of tubes:	62mm approx.		
Weight:	72g (2.5 oz.)	84g (2.9 oz.)	112g (3.9 oz.)
Mount Available for:	Canon-EF/EF-S, Nikon-AF, SONY-α		

DG EXTENSION TUBE SET

10mm, 16mm EXTENSION TUBE SET FOR Micro 4/3



Extension tube set DG for Micro 4/3 consists of 10mm and 16mm rings that come between lens and camera and allow lens to get closer to the object.

Extension tube set DG for Micro 4/3 is precisely made in Japan that guarantees best quality and long life of the product. Electronic contacts correspond with camera to enable auto focus mode and data communication.

SPECIFICATIONS	10mm	16mm
Diaphragm coupling	Perfect coupling	
TTL EE metering	Perfect coupling	
Length of tubes	10mm	16mm
Diameter of tubes	57mm approx.	57mm approx.
Weight	48 g approx.	70 g approx.

10mm, 16mm EXTENSION TUBE SET FOR FULL FRAME SONY E-mount mirrorless cameras



Extension tube set DG for full frame Sony E-mount mirrorless cameras consists of 10mm and 16mm rings that come between lens and camera and allow lens to get closer to the object.

Extension tube set DG for full frame Sony E-mount mirrorless cameras is precisely made in Japan that guarantees best quality and long life of the product. Electronic contacts correspond with camera to enable auto focus mode and data communication.



Extension tube set DG adopts electrostatic flocking finish on the inner surface of the extension ring to minimize internal reflections and flares.

SPECIFICATIONS	10mm	16mm
Diaphragm coupling	Perfect coupling	
TTL EE metering	Perfect coupling	
Length of tubes	10mm	16mm
Diameter of tubes	61.5mm approx.	61.5mm approx.
Weight	44 g approx.	65 g approx.

TELEPLUS HD pro SERIES

FOR DIGITAL SLRs



1.4X, 2X TELEPHOTO CONVERTER

HD pro 1.4X and 2.0X DGX



The Kenko HD pro DGX is a premium series of tele converters that replaces PRO 300 series and is specifically designed to be used with high-resolution DSLR cameras and lenses. KENKO TELEPLUS HD pro DGX Tele converter is a high precision manufactured optical device to be installed between the camera body and the master lens. Its purpose is to multiply the focal length of the lens according to its multiplication factor, changing your lens into a tele lens, with minimum loss of resolution and sharpness of the image. For example, the 1.4x Tele converter can turn a 70-200mm lens into a 98-280mm lens, and the 2x Tele converter can turn it into a 140-400mm lens.

Kenko Teleplus Tele converters can dramatically change your photos by making the object appear larger in the image and yet maintaining its high resolution and quality. This result can be achieved by simply using this lightweight and compact tele converter even if you do not have or cannot afford a good and powerful super tele lens. The optical construction has been redesigned by implementing additional optical elements and incorporating an improved multi-layer anti-reflection coating to keep the original performance of the new generation DSLR cameras and lenses. As for communication with the camera, these tele converters are equipped with all electrical contacts to support communication between the camera and the lens.

The focal length and aperture values will be recorded in EXIF data and converted into the actual shooting values with the tele converter installed. HD pro tele converters also come in a gorgeous external finish: the external design has been retouched in a black leather tone finish to perfectly match with the latest lens and DSLR cameras. With approx. 4cm in height, these small, compact and convenient to carry tele converters will extend the focal length of the lens providing the photographer a great chance to shoot impressive images.

Complete compatibility of Kenko Teleplus HD pro DGX Tele converters is guaranteed only with proprietary lenses (Nikon and Canon) and Tokina lenses (except Tokina AT-X 70-200mm F4 PRO FX VCM-S). For more details on compatibility, please check www.kenkoglobal.com

SPECIFICATIONS	1.4X		2.0X	
	Canon EF	Nikon F	Canon EF	Nikon F
Mount available	Canon EF	Nikon F	Canon EF	Nikon F
Magnification	1.4x		2x	
Construction E/G	5 elements in 4 groups		7 elements in 5 groups	
Coating	Multi-coating		Multi-coating	
Exposure compensation	1 stop		2 stops	
Exposure magnification	Approx 2 times (equivalent to 1 diaphragm)		Approx 4 times (equivalent to 2 diaphragm)	
Diaphragm coupling	Fully Automatic		Fully Automatic	
Barrel Length	19.4mm	19.4mm	39.9mm	39.9mm
Barrel diameter	68mm	67.5mm	68mm	67.5mm
Weight	128g	129g	180g	178g

*Canon EF-S lenses are not compatible.

TELEPLUS HD SERIES

FOR DIGITAL SLRs



1.4X, 2X TELEPHOTO CONVERTER

HD 1.4X and 2.0X DGX



Placed between the camera body and lens, a teleconverter contains a set of optics that will effectively increase the focal length of any lens with which it is used on. The KENKO TELEPLUSHD 1.4X / 2.0X DGX converter has the effect of multiplying the focal length of your lens by 1.4x / 2.0x, turning a 300mm lens into an equivalent 420mm lens for the 1.4x and 600mm for the 2.0x.

Both the HD 1.4X and 2.0X DGX converters have genuine Gate Array IC (Integrated Circuitry). This means the converter's unique circuitry maintains signal integrity between the camera body and lens. The 3-5-element design made with high quality multi-coated optical glass supplied by Hoya Corporation, the world's largest manufacturer of optical glass.

Full AF operation with the TELEPLUS HD 2.0X / 1.4X is possible using a camera lens with an open aperture of F4 or brighter while the 2.0X DGX would require an open aperture of F2.8 or brighter. Please be aware that AF will work properly only if there is enough light and contrast on the subject to activate the camera's AF sensors properly. (Manual focusing may be necessary when using lenses with smaller open f-stop values than that given above.)

The TELEPLUS DGX converters have updated circuitry to record exif data more accurately. In the exif exposure data (meta-data recorded with a digital picture) TELEPLUS DGX converters record the equivalent aperture and focal length of the lens setting plus teleconverter. Optically and mechanically they are identical to the prior high-quality TELEPLUS DG converters.

Lens performance has been improved dramatically as compared to the MC4 and MC7 models. The improvement in resolution is especially marked, 150% for 1.4X and 180% for 2X respectively in comparison to the current models.

Complete compatibility of Kenko Teleplus HD DGX Tele converters is guaranteed only with proprietary lenses (Nikon and Canon) and Tokina lenses (except Tokina AT-X 70-200mm F4 PRO FX VCM-S). For more details on compatibility, please check www.kenkoglobal.com

SPECIFICATIONS	1.4X		2.0X	
	Canon EF/EF-S	Nikon F	Canon EF/EF-S	Nikon F
Mount available	Canon EF/EF-S	Nikon F	Canon EF/EF-S	Nikon F
Magnification	1.4x		2x	
Construction E/G	3 elements in 2 groups		5 elements in 3 groups	
Coating	Multi-coating		Multi-coating	
Exposure compensation	1 stop		2 stops	
Exposure magnification	Approx 2 times (equivalent to 1 diaphragm)		Approx 4 times (equivalent to 2 diaphragm)	
Diaphragm coupling	Fully Automatic		Fully Automatic	
Barrel Length	18mm	15.6mm	35.9mm	36mm
Barrel diameter	68mm	67.5mm	68mm	68mm
Weight	111g	126g	168g	171g

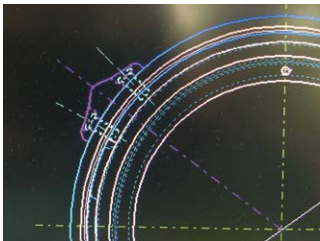
*Compatible only for Nikon AF-S lenses.



Kenko proudly presents it's own exclusive line for mount adapters that allow photographers to use their old and favorite lenses with different new and trendy digital cameras. It is time for everyone to express their individuality through the image.

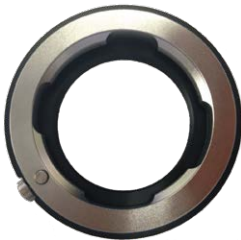
Precision in every detail

Manufactured in Japan, Kenko Mount adapters ensures best quality in every detail. Each part of the product including lock lever is designed and processed with the maximum precision and accuracy level that is required by genuine camera and lenses manufacturers.



Thinking about user and equipment

Much attention is paid to accurate finishing of every part and unit that has direct contact with users' hand and equipment in order to prevent any damage or injure. As a world-wide known Kenko Teleplus converter and Kenko Extension tubes manufacturer we used our rich experience in producing a lock lever that will not let the lens fall off or get stuck inside the mount.



More versatility

Inside diameter of the mount adapter is as wide as possible to provide maximum versatility. It eliminates vignetting allowing you to use wide angle lenses on full format cameras.



For best optical performance

Compared with other brand mount adapters, Kenko mount adapters have matte finish exterior with circle threads to prevent internal reflections and light leaks.

Simplicity in design

We believe that the potential users of Kenko mount adapters would prefer simple design that perfectly matches the design of old lenses. So we made simple design with minimum but enough to understand information on the body.



Kenko mount adapters line-up

Lens Body	Canon FD	Nikon F	Contax	Leica M	Leica R	Praktica M42	Leica L
Leica M					○		○
MTF M4/3	○	○	○	○		○	
Sony E	○	○	○	○		○	
Canon EF-M	○	○	○	○		○	
Fuji-X	○	○	○	○		○	
Nikon 1				○			

Note:

When combined with different cameras the angle of view of the lens can change. The angle of view depends on the effective size of the camera sensor. Digital sensors are usually smaller than 35mm film, and this causes the lens to have a narrower angle of view than with 35mm film. To find out what will be the angle view of you lens please, refer to camera manufacturer web site.

Light Meter

One of most important value for a Photograph is exposure. Kenko light meter can select best exposure value.



KFM-1100 AUTO DIGI METER

*For Both Flash and Ambient Light Readings
Simple, Easy-to-Use and Accurate*

The Kenko KFM-1100 Autometer is a user-friendly and ergonomically designed light meter for reading both ambient and flash light. This simple and reliable meter is both comfortable in your hand and logically designed, with a minimum of confusing buttons.

The large LCD display reads out in "F" numbers in 10ths of stops and in 1/2 stop increments in a pointer scale across the top of the display. With a shutter speed range of 1/8000 second to 30 minutes, this meter is quite sensitive. In its cine mode, frame rates of 8-128 can be achieved.

As a flash meter, the KFM-1100 can be used with or without a sync cord, and has an aperture range of F/1.0 - f/128. As an added bonus, both flash and ambient lighting can be analyzed to determine the lighting ratio of any scene. This feature is very handy in scenes where a flash is being used to "open up" a shadowed area left by ambient (natural) light.

The meter's "Calculation" function can be used to average measurements that have been stored in memory, very useful in reflected light measurements, to capture highlight or shadow detail more accurately.

The KFM-1100 can store 2 measurements that can be recalled for reference or for averaging. Just press the "M" button after each reading to store it in memory. If the memory has two readings stored, it will delete the oldest reading to store the current information.

KFM-2200 FLASH METER

*Light Meter For Both Flash and
Ambient light With Integrated Spot Meter.
Include ISO variable mode*



The Kenko KFM-2200 Cine & Flash Meter is a digital handheld exposure meter capable of both incident and reflected light measurement, including flash and strobes. The KFM-2200 utilizes a spherical diffuser with a 270° rotation angle for most readings, including the ability to take a 1° spot measurement using the viewfinder. It can then use one of three measurement modes depending on your specific needs.

For working with both cinema and still photography use, there are a variety of additional settings, especially a large selection of shutter speeds from 30 minutes to 1/16000 second. It even features a flash sync terminal for metering your strobes for still photography. Also, it can display an aperture range from f/1.0 to f/128 and 9/10.

The digital LCD display is backlit to increase readability and shows a variety of parameters, each of which can be set to determine proper exposure values for your camera settings. The KFM-220 also features a viewfinder with diopter adjustment for taking spot measurements of reflected light. It includes a soft case and strap for storage and travel.

KCM-3100 COLOR METER

*Knowing the color temperature before taking
a photograph saves you time and money*



The Kenko KCM-3100 Color Temperature Meter reads both ambient and flash light. In photography, accuracy is what counts. When shooting in any kind of mixed lighting scenario, a good, reliable color temperature meter is the only true and proven way to get accurate readings. In areas such as commercial, fashion and certainly architectural work, a color temperature meter is a "must".

This meter is designed with a minimum of clutter and is very user-friendly. The large LCD readout combined with its variety of features make this meter a top contender.

The KCM-3100 has 3 display modes for displaying color temperature. Each mode is designed for a certain type of photography or filtering system. LB (Light Balancing) index is used to select the necessary amber or blue LB filter; The Mired difference between the specific photographic color temperature for the selected film type and the light source.

CC (Color-Correction) displays the Kodak filter number(s) of the necessary light-balancing filter(s) to make for easy selection of the required light balancing filter. Whereas the LB system uses amber or blue filters, the CC system uses magenta or green color compensating filters.

Finally, it displays photographic color temperature in degrees Kelvin. This is a useful setting to determine filtration based on the light source and the spectral sensitivity of the film used.

Other benefits of this meter are its ability to read in either sync or non-sync mode, i.e. without a cord. It also has an "Analyzer Mode" for measurement of flash lighting only. Setting the shutter speed to "F", the meter will only read light from flash.

CLEANING KIT PRO5 KCA-S01

As a kit, CLEANING KIT PRO5 conveniently includes all the necessary tools for a professional and accurate cleaning of your camera, lens, filters, etc. In its package you will find a blower, a pen-shaped lens cleaner, a brush, GEKIOCHI camera lens cleaner and a cleaning cloth. To make it even easier for those who have to deal with their gears maintenance for the first time, this kit also includes a cleaning manual - an easy-to-follow cleaning and maintaining instruction in four steps – especially created by Kenko Tokina optical experts.



Kit content

- 1) Blower 1pcs.
- 2) Pen-shaped lens cleaner (carbon type) 1 pcs.
- 3) Brush 1pcs.
- 4) GEKIOCHI camera lens cleaner 3 pcs.
- 5) Cleaning cloth 1pcs.

In addition, a beginner-friendly cleaning manual especially created by Kenko Tokina optical experts is also included.

Cleaning tips

Before cleansing, blow off any dirt or dust from the camera and lens surface with the blower. With the brush you can first roughly remove most of the dirt from the cleaning surface, and then with the blower you can minutely blow off fine dust particles. The pen-shaped lens cleaner and the GEKIOCHI camera lens cleaner are best suited for lens cleaning.

When cleaning the external parts, blow off dust with the blower and the brush first, then proceed with cleansing using the cleaning cloth. GEKIOCHI camera lens cleaner is also particularly recommended in case dirt will be hard to wipe off with a dry cloth, and can be conveniently carried with you to clean your gears any time and in any situation.

Dry Fresh

Kenko Dry Fresh contains a powerful desiccant that can prevent all your precious cameras, lenses, memory cards etc. from the risk of being damaged by mold and humidity, or be subjected to quality and color alterations due to bad storage conditions. This is possible because Dry Fresh makes use of "B-type" silica gel grains, which have a regenerating capacity. Even after absorbing a high quantity of humidity, they can be regenerated, and therefore reused, by simply letting them sun-dry for half a day or more.



The "regeneration signal mark" on the "white side" of Kenko Dry Fresh "sheet type" will help you know the best time to regenerate the silica gel. By turning the sheets with the black part up toward the sun rays, the silica gel grains can also dry faster and are soon reusable.

Dry Fresh is also available in "sheet" or "stick" types, and you can choose from 1 to 10 quantity packs according to your needs.



GEKIOCHI camera lens cleaner

GEKIOCHI wet cleaning wipes perform an easy, effective and safe cleaning action on your gears and equipment.

Each wipe is singularly wrapped to be easy-to-carry and ready-to-use. Its micro fibers (Nano Wiper®) perform a deep but gentle cleaning, and its alcohol particles can remove dirt, grease, fingerprints etc.

It can be also used on plastic and results suitable for cleaning multi-coated* lenses or filters without damaging the coating layers. Each package contains 30 wipes.

*Do not use on lenses or displays with deteriorated coating or damaged



Suitable for: Lenses, filters, smartphones, tablets, glasses and sunglasses, portable gaming consoles





ADVANCED DRONE FILTERS IRND KIT (4/8/16/32)
for DJI Phantom 4 Pro/Advanced/Pro V2.0/Mavic Air

Advance Drone Filters IRND KIT is a convenient set of 4 IRND filters for drone video shooting. The current line-up includes kits compatible with DJI Phantom 4 Pro/Advanced/Pro V2.0 and DJI Mavic Air drone models. Each filter features a different density, to be suitable to any kind of light intensity conditions. The Accu-ND Technology adopted achieves extremely accurate neutrality for these filters, to prevent color shift or IR pollution from affecting the final image. The just-fit frame design pursues for maximum light and does not affect the drone's gimbal or flight operations. Being a screw-type, it also secures the filter to the drone's camera with no risk of falling off. IRND KIT filters also incorporate an anti-reflection and water-repellent coating, and come within an all-weather case to protect them from moisture or dust, rain or snow.



Series name	Advanced Drone Filters	
Product name	IRND KIT	IRND KIT
Compatible drone model	DJI Phantom 4Pro/ Advanced/Pro V2.0	DJI Mavic Air
Filter model	IRND	IRND
Glass thickness, mm	0.5	0.5
Frame material	Light aluminum alloy	Light aluminum alloy
Filter size, mm	34	15.6
Filter frame thickness, mm	9	4.7
Attaching type	Screw type	Screw type
Filter weight, g	2.8	0.55
Country of origin	China	China
Case	All-weather protective hard case	All-weather protective hard case

Filter / Size (mm)	32	37	39	40.5	43	46	48	49	52	55	58	62	67	72	77	82	86	95	105
ZX PROTECTOR																o	o	o	
Celeste UV		o		o		o		o	o	o	o	o	o	o	o	o			
Celeste C-PL		o		o		o		o	o	o	o	o	o	o	o	o			
REALPRO Protector		o		o	o	o		o	o	o	o	o	o	o	o	o	o	o	o
REALPRO UV		o		o	o	o		o	o	o	o	o	o	o	o	o	o	o	o
REALPRO C-PL		o		o	o	o		o	o	o	o	o	o	o	o	o	o	o	o
REALPRO ND4								o	o	o	o	o	o	o	o	o			
REALPRO ND8								o	o	o	o	o	o	o	o	o			
REALPRO ND16								o	o	o	o	o	o	o	o	o			
REALPRO ND32								o	o	o	o	o	o	o	o	o			
REALPRO ND64								o	o	o	o	o	o	o	o	o			
REALPRO ND100								o	o	o	o	o	o	o	o	o			
REALPRO ND200								o	o	o	o	o	o	o	o	o			
REALPRO ND500								o	o	o	o	o	o	o	o	o			
REALPRO ND1000								o	o	o	o	o	o	o	o	o			
REALPRO R-Cross Screen								o	o	o	o	o	o	o	o	o			
REALPRO Softon A								o	o	o	o	o	o	o	o	o			
REALPRO R72								o	o	o	o	o	o	o	o	o			
Smart Clear Pro		o		o	o	o		o	o	o	o	o	o	o	o	o			
Smart Protector		o	o	o	o	o		o	o	o	o	o	o	o	o	o			
Smart MC UV 370		o		o	o	o		o	o	o	o	o	o	o	o	o			
Smart C-PL		o		o	o	o		o	o	o	o	o	o	o	o	o			
Smart ND8		o		o	o	o		o	o	o	o	o	o	o	o	o			
Smart Filter Kit		o		o	o	o		o	o	o	o	o	o	o	o	o			
Variable NDX																o	o		
PL Fader									o	o	o	o	o	o	o	o			
Astro LPR Filter Type I	o*1						o		o				o	o	o				
Astro LPR Filter Type II	o*1						o		o				o	o	o				
AC Close-UP Lens No2								o	o	o	o	o	o	o	o				
AC Close-UP Lens No3								o	o	o	o								
AC Close-UP Lens No4								o	o	o	o								
AC Close-UP Lens No5								o	o	o	o								
	32	37	39	40.5	43	46	48	49	52	55	58	62	67	72	77	82	86	95	105

*1 Astro LPR Filter Type I, II - 31.7mm

As a filters manufacturer, Kenko offers a wider choice of filters beyond those published in this table.
Check for Kenko filters complete line-up here: www.kenkoglobal.com



We open the world of imagination



Kenko



Kenko Tokina

Kenko Tokina Co., Ltd.

5-68-10 Nakano, Nakano-ku,

Tokyo 164-8616, Japan

Visit our website : www.kenkoglobal.com